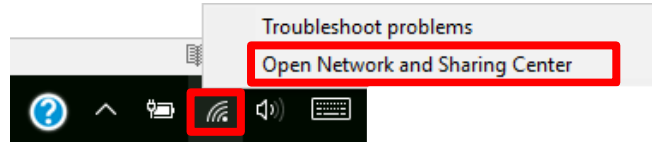
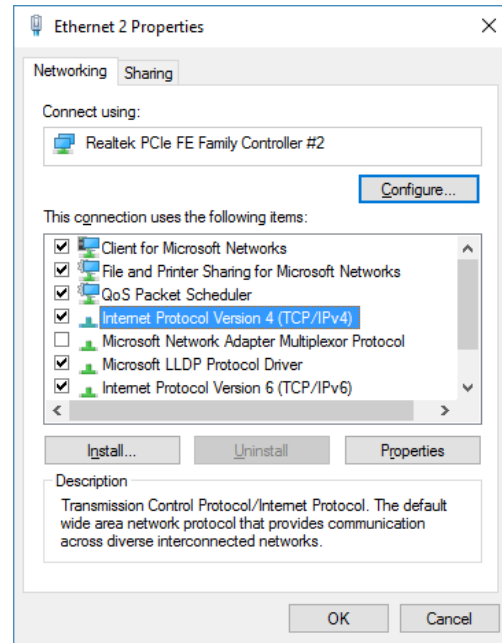
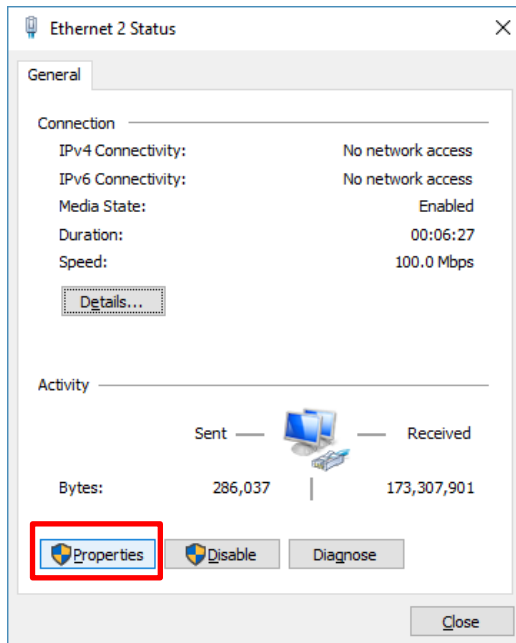
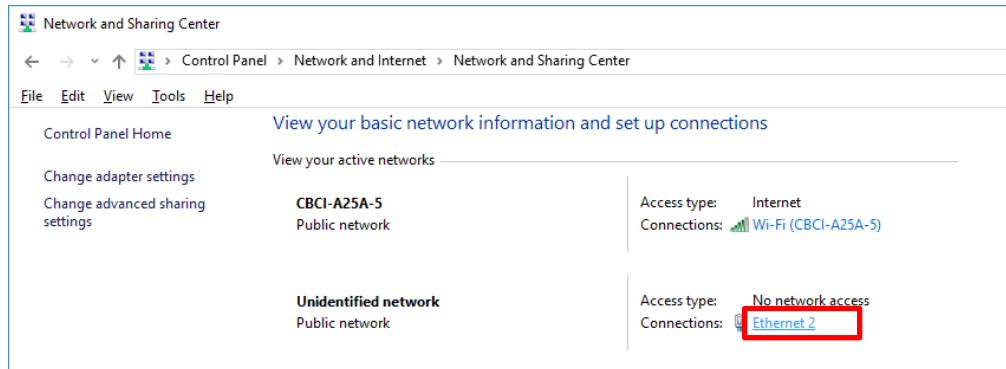


Connect the camera with your computer via Ethernet cable:

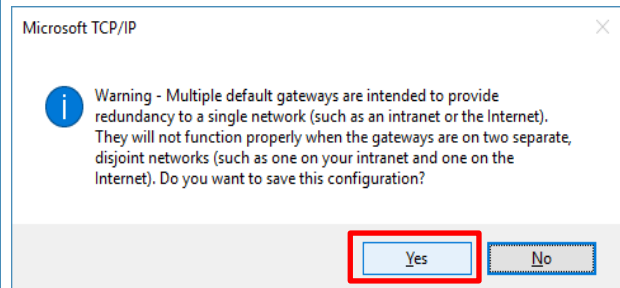
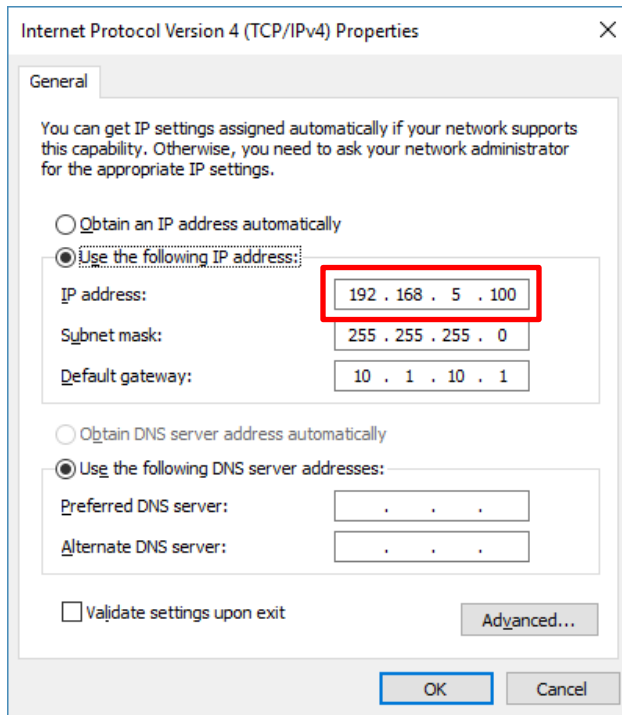
On the bottom-right corner of your desktop, right click on the Network icon, then click on the “Open Network and Sharing Center”.



Click on “Ethernet2” -> “Properties” -> double click on “Internet Protocol Version 4(TCP/IPv4)”.



Choose “Use the following IP address”, change computer “IP address” (referred to as IP2) to be consistent with the camera IP address (referred to as IP3). For example, AV-1364 tracking camera default IP address (IP3): 192.168.5.191, thus the user can change the computer IP address (IP2) to 192.168.5.100. Make sure the first 3 sections are the same. Click on “OK”. In the warning window, click on “Yes”.



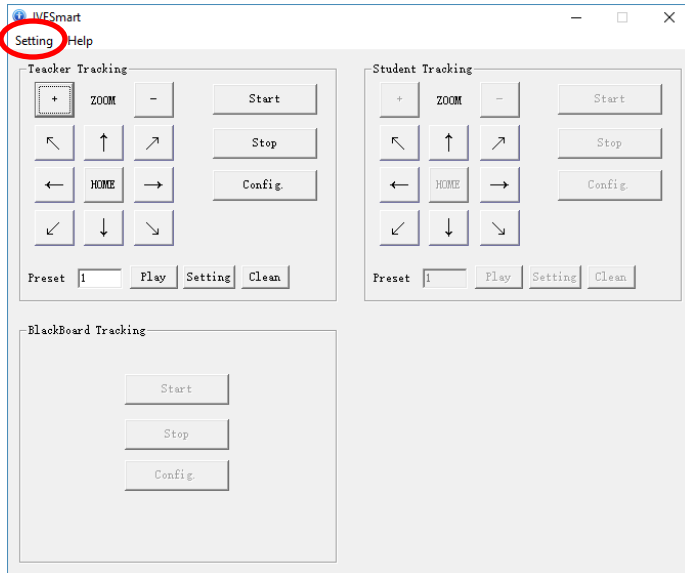
To control the tracking camera and panoramic camera separately using IE browser UI:

Open IE browser (IE browser works best with AV-1364, other browser might cause latency or incompatibility), input 192.168.5.191/ 192.168.5.192 (the default IP addr of both the cameras) in the address bar, log in with user name: admin, password: admin.

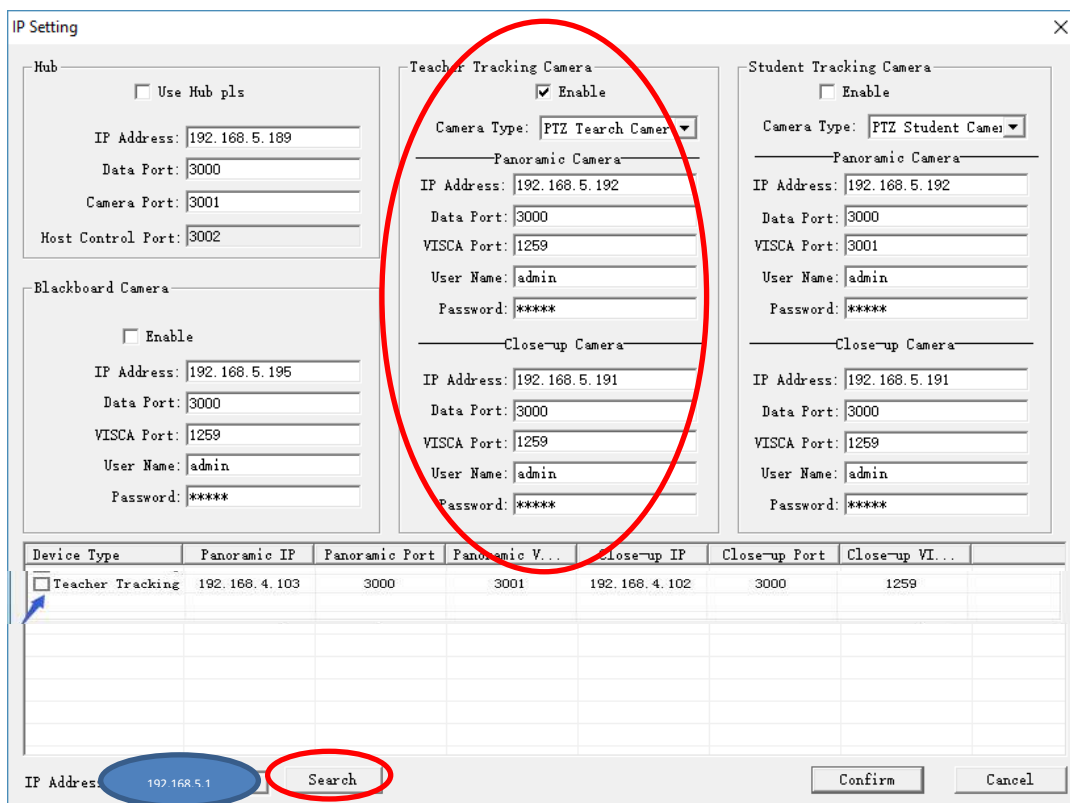
To use the IESmart software:

Use a router to connect the tracking cam, the panoramic cam and your PC.

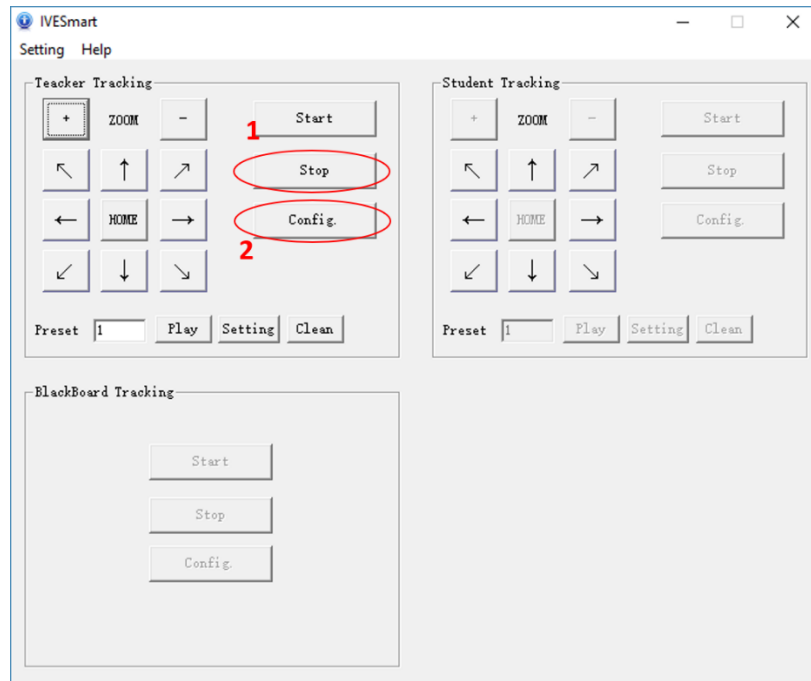
Open the software, go to Settings -> IP Address



Use the settings as shown below, choose the Ethernet IP: 192.168.5.100, then click search, you'll be able to see the Teacher Tracking device shown. Click Confirm.



It'll go back to the main interface, click "stop" to stop the tracking mode, and then "configuration".



You should be able to see the images from both cameras now.

