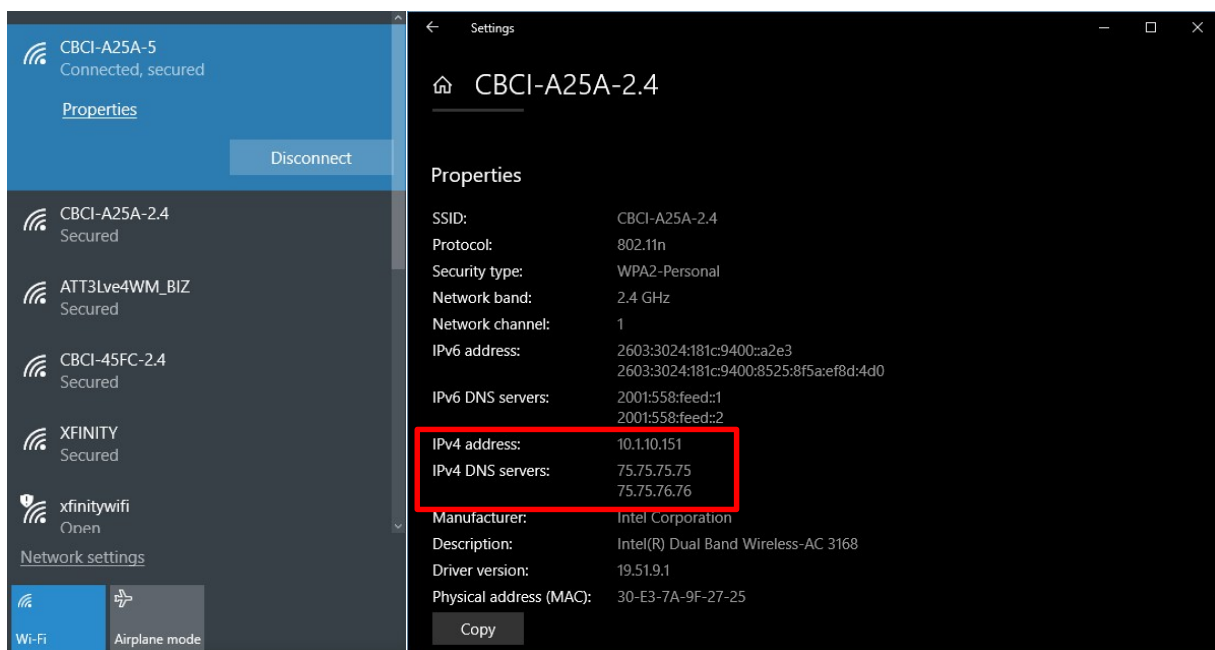


How to live stream directly from the AViPAS cameras via RTMP (AV-1560 Series)

1. Find the router IP address and DNS number.

On the bottom-right corner of your desktop, click on the Network icon, then click on the name of the currently-connected network name. Click on “Properties”.

In the “Settings” window, find the router’s IP address and the DNS servers.



2. Update Camera IP address and settings.

Open a browser, login to camera’s web user interface with username/password: admin. (If you have question about how to access camera via IP, please refer to

https://www.avipas.com/_files/ugd/6b6a18_638a51a17f454bfda75aff9d53784447.pdf)

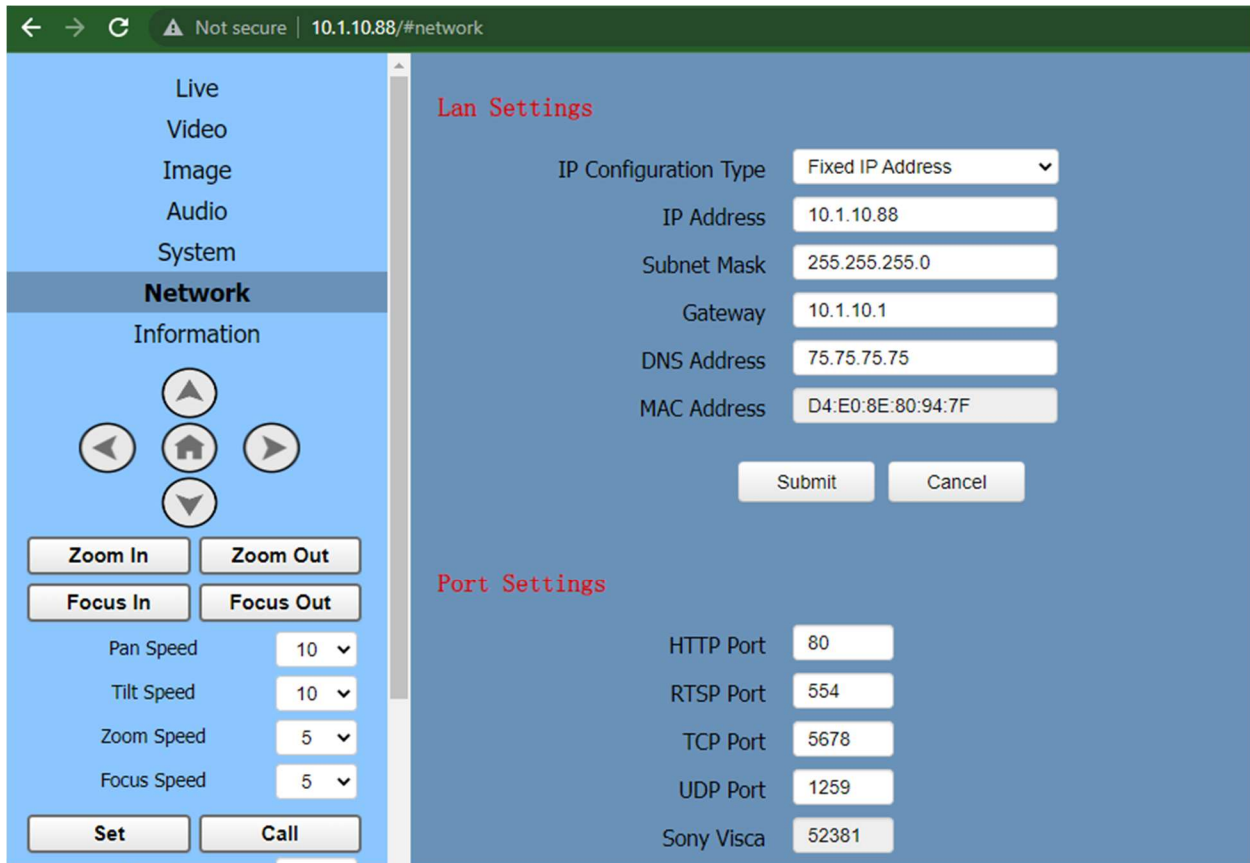
Go to the Ethernet setting and click "Network":

- Select “IP Configuration Type” as Fixed IP Address.
- Update the first three sections of Camera's IP address to be the same as the router IP address, keep the last section to be unique.
- Enter the subnet mask as: 255.255.255.0

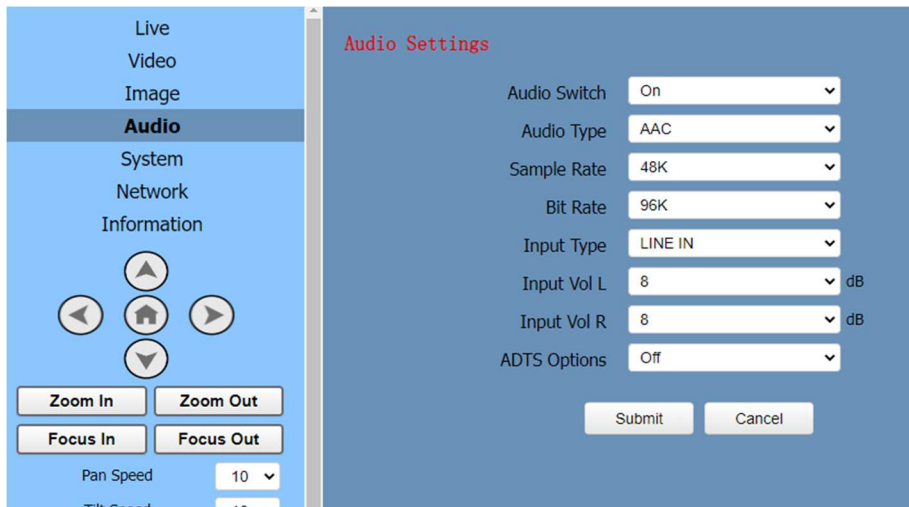
- Change the default gateway: keep the first three sections to be the same as the router's IP address, enter 1 in the last section.
- Enter the router's DNS server number.
- Submit the changes

Example: If the router IP address is 10.1.10.151, then the user may change the camera's IP address as: 10.1.10.88 and change Gateway as: 10.1.10.1

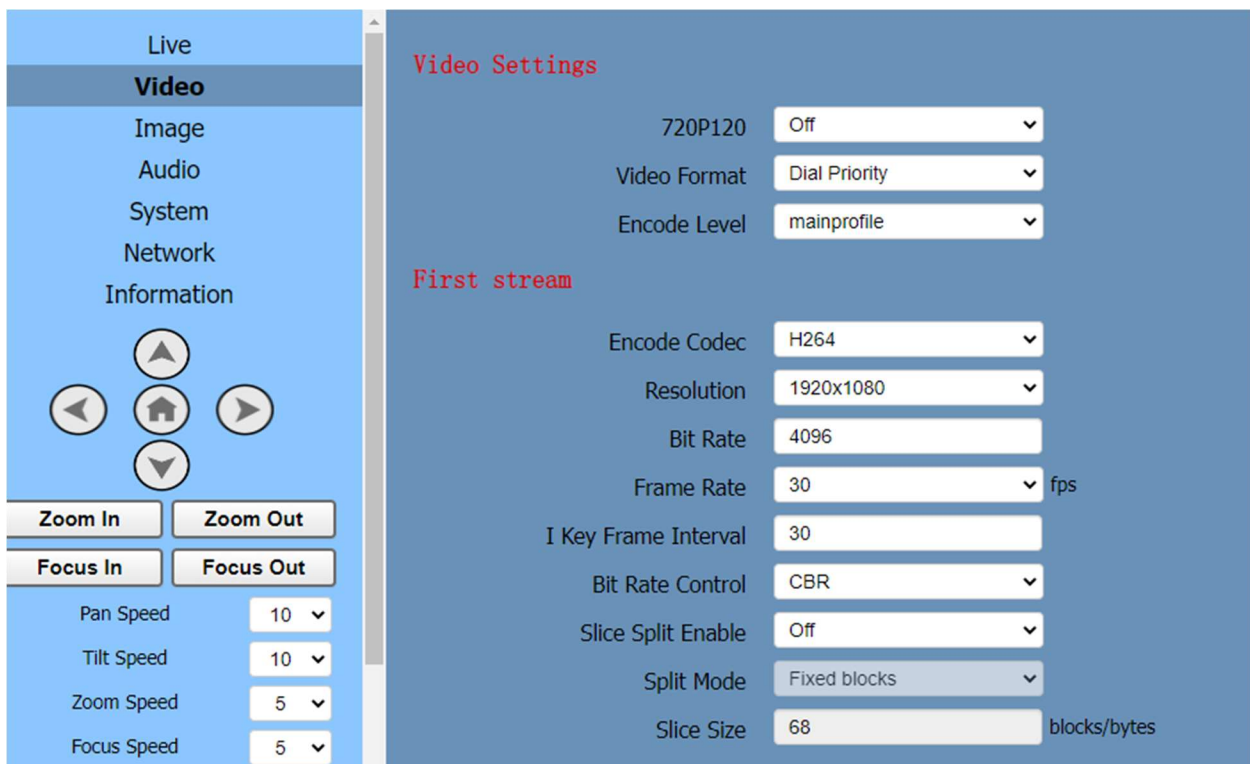
As shown in the picture below:



If you plan to use AViPAS cameras for streaming directly to your CDN such as Facebook or YouTube you may want to use a line level microphone input. Go to "Audio", turn on the "Audio Switch", choose "Audio Type" as AAC. Submit the changes.



You can also update the video setting under the “Video” section. Submit the changes.



After updating the camera’s settings, please reboot the camera: Click on "System" -> “Reboot”.

3. Start live streaming

Disconnect the camera from your computer, and connect the camera to the router (Internet port) via Ethernet cable. Open browser, enter the updated camera’s IP address in the address bar, log in with username: admin, password: admin. Go to “Network” -> “RTMP Settings”:

1. Turn On the "First stream", enable the "Video" and "Audio".
2. Copy the stream URL and stream Key from your live streaming platform and paste it to "MRL". Put the stream Key behind the Stream Name.
For example, if the Server URL is `rtmp://a.rtmp.youtube.com/live2` and Stream key is `v0jb-9j6y-gfck-tzf2-ch86`, then the RTMP Address is `rtmp://a.rtmp.youtube.com/live2/v0jb-9j6y-gfck-tzf2-ch86`

Save the changes and reboot the camera. You will be able to see the live video in platform preview page shortly.

