

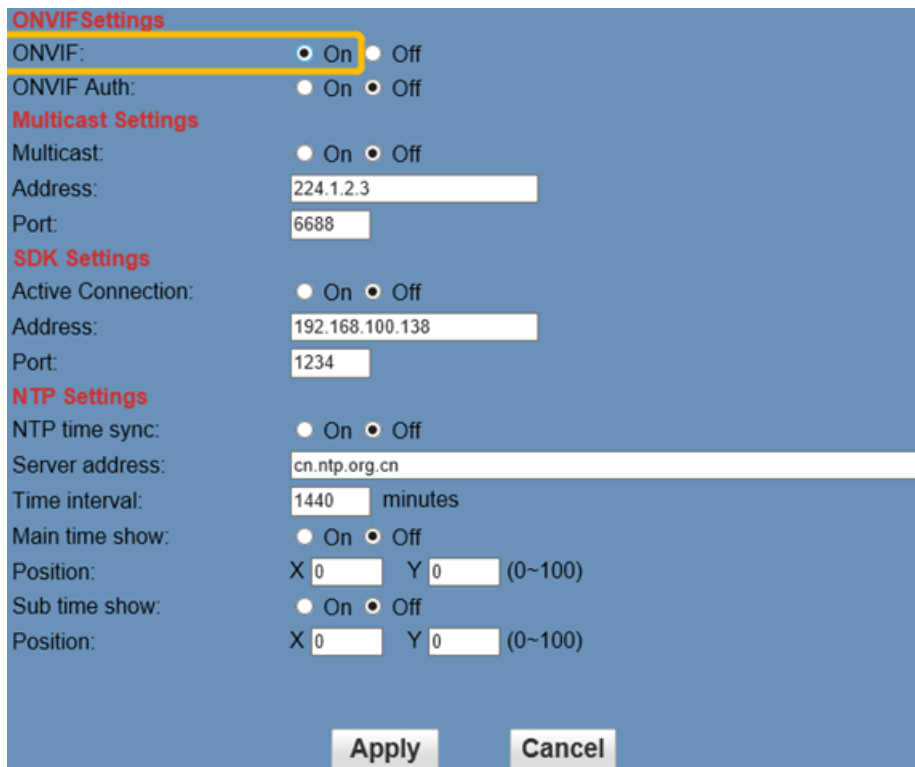
## Use ONVIF Device Manager for AViPAS Cameras (Windows)

ONVIF Device Manager is very easy to set up and it's a very useful tool to access AViPAS PTZ cameras. You can use it to set camera's static IP address, see the preview video and have pan tilt zoom controls of the camera.

Please use this link to download ONVIF Device Manager:

<https://sourceforge.net/projects/onvifdm/>

For **AV-1560/1360/1071/1070**, you need to enable the "ONVIF" in the webpage network settings (log onto the camera's built-in webpage and turn on the "ONVIF", click "Apply" and then reboot.)



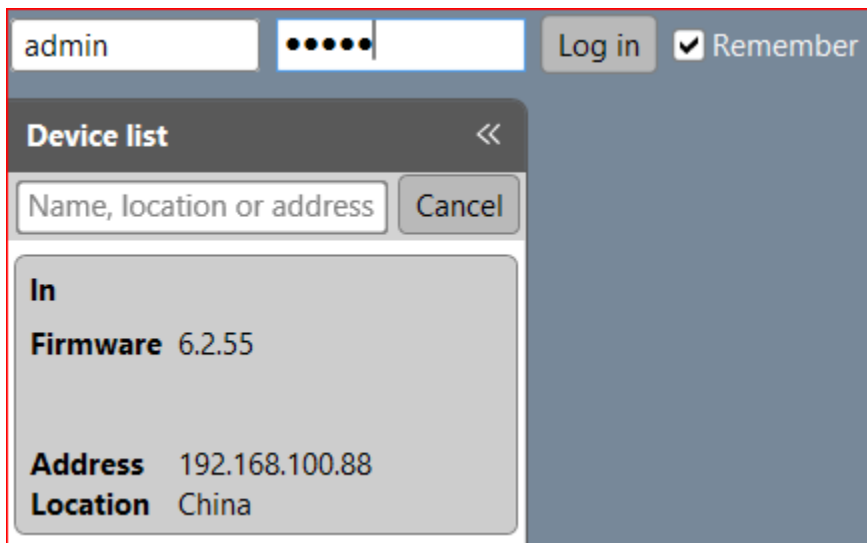
The screenshot shows a web interface for camera settings. The 'ONVIF Settings' section is highlighted with a yellow box. The 'ONVIF' option is set to 'On'. Below it, 'ONVIF Auth' is set to 'On'. The 'Multicast Settings' section includes 'Multicast' set to 'Off', 'Address' set to '224.1.2.3', and 'Port' set to '6688'. The 'SDK Settings' section includes 'Active Connection' set to 'Off', 'Address' set to '192.168.100.138', and 'Port' set to '1234'. The 'NTP Settings' section includes 'NTP time sync' set to 'Off', 'Server address' set to 'cn.ntp.org.cn', 'Time interval' set to '1440' minutes, 'Main time show' set to 'Off', 'Position' set to 'X 0 Y 0 (0~100)', 'Sub time show' set to 'Off', and 'Position' set to 'X 0 Y 0 (0~100)'. At the bottom, there are 'Apply' and 'Cancel' buttons.

For **AV-1281/1280/1081/1080/1251/1250/1563/1562**, you don't need to do this step.

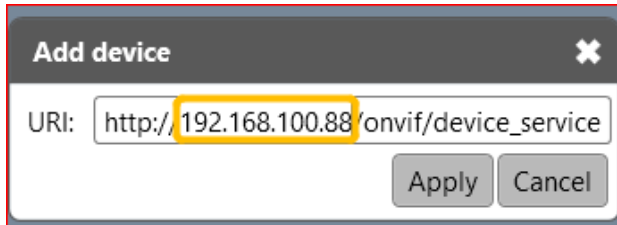
Next, connect the camera directly with your computer via an Ethernet cable or set the camera to be in the same network as your computer. In other word, your PTZ camera is in the same network range as your computer. Open "ONVIF Device Manager", the page looks like below:



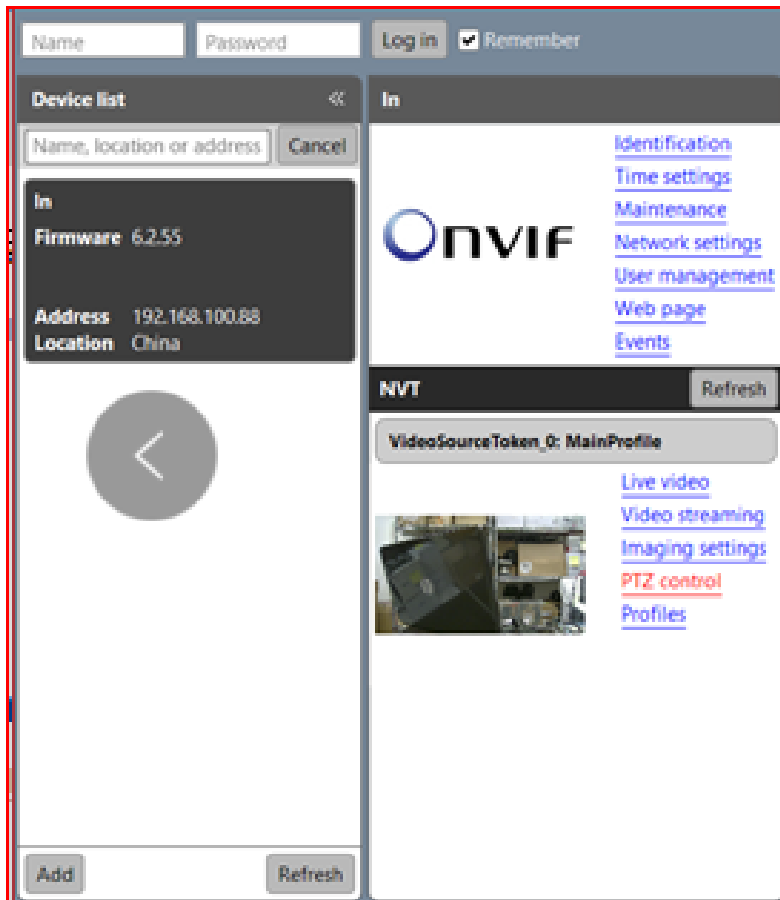
Most times your camera will show up on the top left corner with Firmware version and IP address.



If your camera doesn't populate automatically, try to click "Add" and add it in the pop up window (replace with your camera's static IP address)

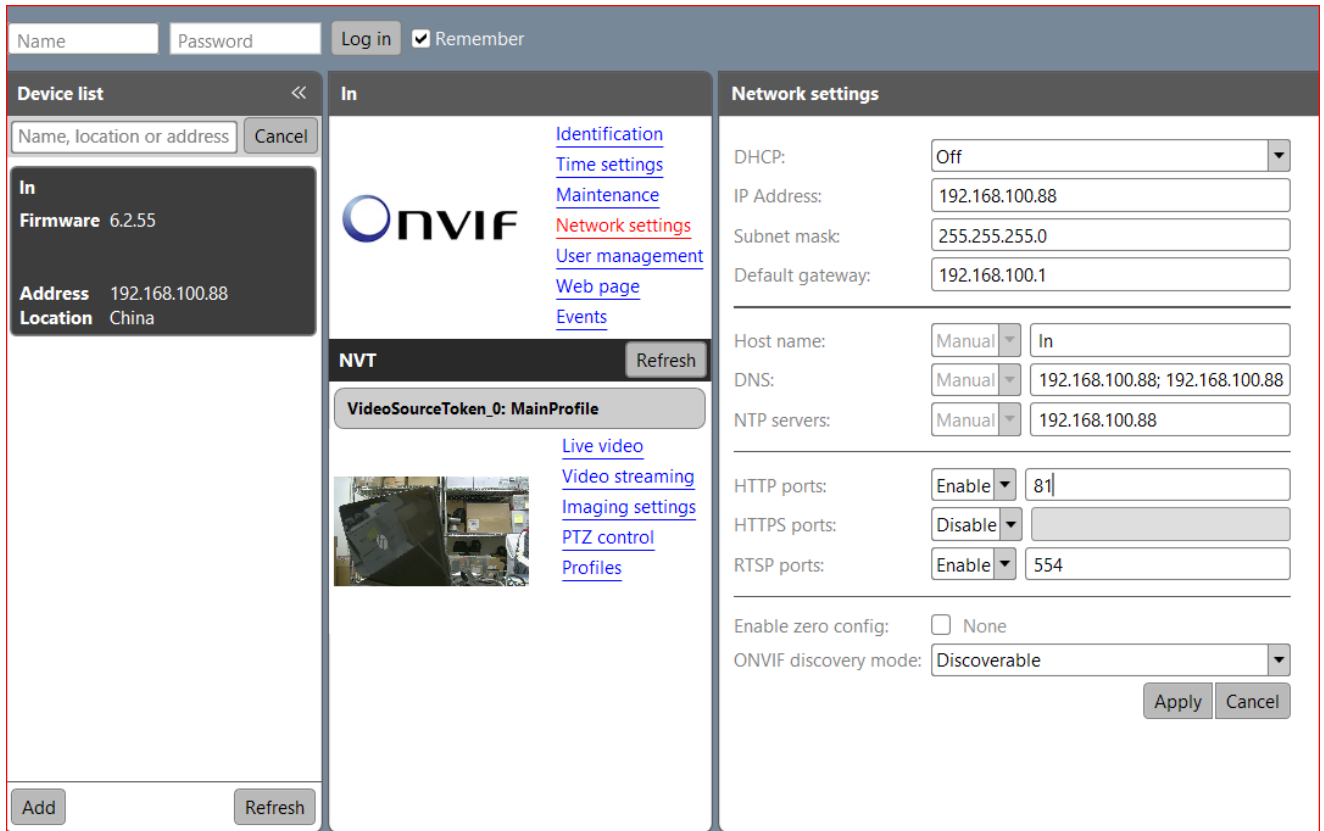


After the camera is added successfully, log in on the top left, and click on the camera info square, it will start to load, and you will see page like below:

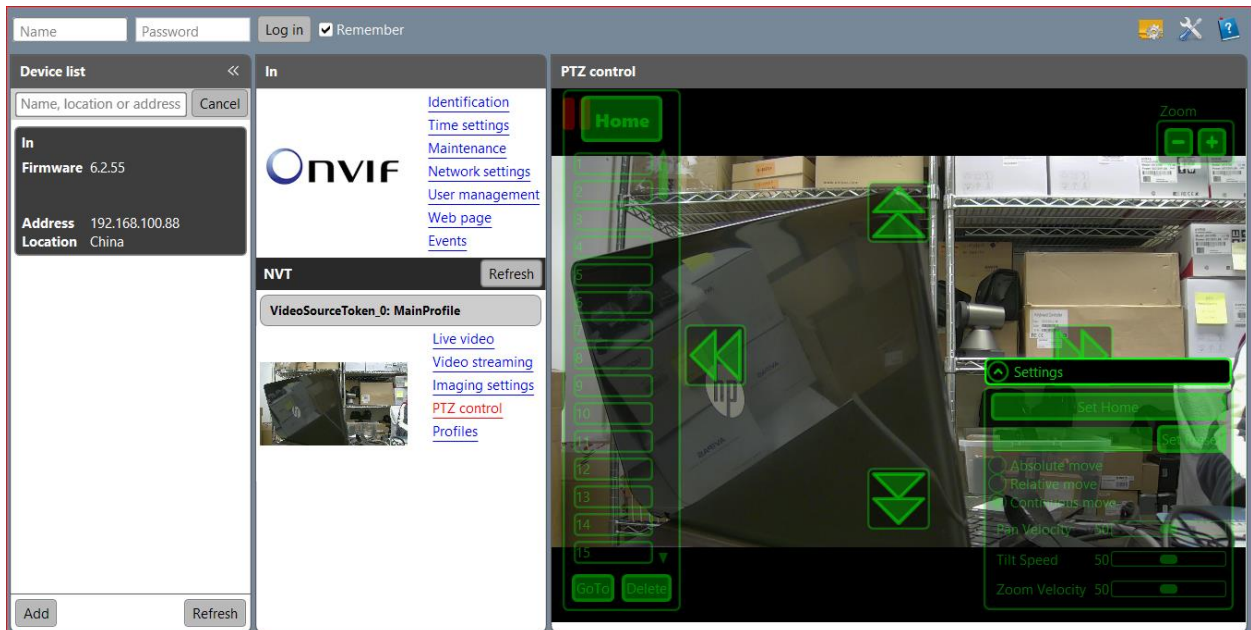


Click on "Live video", you will see the camera's preview. Some browsers now prohibit VLC media plugin and Flash player will stop working at the end of 2020, this ONVIF device manager is a good alternative tool for Windows users who want to see the preview video of their cameras.

Click on "Network Settings", you can see the IP and other information of your camera and you can change the static IP of your camera on this page.



Click on “PTZ control”, you will go to below page, and here you can pan, tilt and zoom control you camera. But the preset settings don’t work on this page.



\*Port information for all AViPAS cameras:

<b>Model Number</b>	<b>IP Address</b>	<b>Subnet mask</b>	<b>Gateway</b>	<b>UDP port</b>	<b>ONVIF port</b>	<b>Username/ Password</b>
AV-2020/2010	192.168.1.188	255.255.255.0	192.168.1.1	52381	8000	admin/admin
AV-1560	192.168.100.88		192.168.100.1	1259	81	
AV-1071			192.168.5.163		192.168.5.1	
AV-1080/1081/1082						
AV-1280/1281						
AV-1250/1251						
AV-1361/1362						
AV-1563/1562						
AV-1161				NA	80	admin/123456